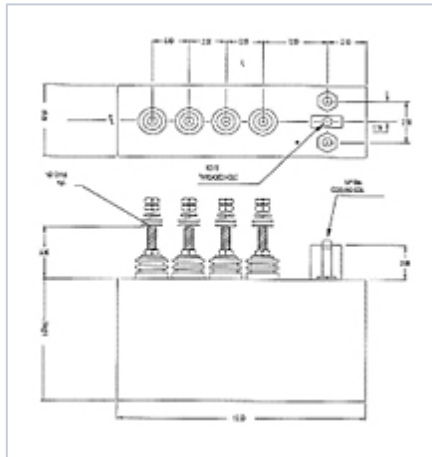




High Energy Corp
 PO Box 308
 Lower Valley Road
 Parkesburg, PA 19365
Phone: 610-593-2800
Fax: 610-593-2985
Website: www.highenergycorp.com

AR Series Water-Cooled Oil-Filled Caps

- High capacitance at high power
- 6 to 1400 μF capacitance
- 800 to 1250 V_{RMS}
- 240 to 2000 A_{RMS}
- 300 to 2000 kVA
- Up to 25 kHz
- One Year Warranty



1

Part Number	Total Capacitance	Capacitance By Tap	$V_{\text{MAX}}(\text{RMS})$	S_{MAX}	$I_{\text{MAX}}(\text{RMS})$
<u>ARS18</u>	750 μF	4 x 187.5 μF	900 V	N/A	1000 A
<u>ARS19</u>	1400 μF	4 x 350 μF	750 V	N/A	1000 A
<u>AR482</u>	10.18 μF	1.45 + 2.91 + 5.82 μF	1250 V	300 $\text{kV}\cdot\text{A}$	240 A
<u>AR499</u>	24.87 μF	1.31 + 2.62 + 5.24 + 2 x 7.85 μF	800 V	300 $\text{kV}\cdot\text{A}$	375 A
<u>AR488</u>	37.34 μF	1.96 + 3.93 + 7.85 + 2 x 11.8 μF	800 V	450 $\text{kV}\cdot\text{A}$	563 A
<u>AR485</u>	74.60 μF	4 x 18.65 μF	800 V	900 $\text{kV}\cdot\text{A}$	1125 A
<u>AR487</u>	63.65 μF	5 x 12.73 μF	1000 V	1200 $\text{kV}\cdot\text{A}$	1200 A

<u>Part Number</u>	<u>Total Capacitance</u>	<u>Capacitance By Tap</u>	<u>V_{MAX} (RMS)</u>	<u>S_{MAX}</u>	<u>I_{MAX} (RMS)</u>
<u>AR496</u>	40.80 μ F	4 x 3.4 + 4 x 6.8 μ F	1250 V	1200 kV·A	960 A
<u>AR481</u>	7.77 μ F	2 x 0.78 + 1.55 + 2 x 2.33 μ F	800 V	300 kV·A	375 A
<u>AR490</u>	11.72 μ F	0.26 + 0.52 + 1.04 + 2.1 + 2 x 3.9 μ F	800 V	450 kV·A	563 A
<u>AR492</u>	17.48 μ F	4 x 4.37 μ F	800 V	675 kV·A	844 A
<u>AR486</u>	19.92 μ F	6 x 3.32 μ F	1000 V	1200 kV·A	1200 A
<u>AR495</u>	31.10 μ F	5 x 6.22 μ F	800 V	1200 kV·A	1500 A
<u>AR498</u>	13.40 μ F	2 x 1.34 + 4 x 2.68 μ F	1250 V	1260 kV·A	1008 A
<u>AR500</u>	15.54 μ F	2 x 1.55 + 4 x 3.11 μ F	1200 V	1350 kV·A	1125 A
<u>AR493</u>	19.88 μ F	4 x 4.97 μ F	800 V	800 kV·A	1100 A
<u>AR497</u>	13.26 μ F	2 x 1.33 + 4 x 2.65 μ F	1200 V	1200 kV·A	1000 A
<u>AR483</u>	31.08 μ F	6 x 5.18 μ F	800 V	1250 kV·A	1563 A
<u>AR489</u>	39.90 μ F	1.9 + 3.8 + 6 x 5.7 μ F	800 V	1600 kV·A	2000 A
<u>AR484</u>	6.0 μ F	6 x 1 μ F	800 V	603 kV·A	754 A
<u>AR491</u>	4.92 μ F	6 x 0.82 μ F	1250 V	1200 kV·A	960 A
<u>AR CUSTOM</u>	N/A	N/A	N/A	N/A	N/A